

ARCHETYPE



QUARTZ



HEMP



HERBAL



BOURBON



ANCHOR



VERMILION



ADMIRAL



SILT



BLACKBERRY

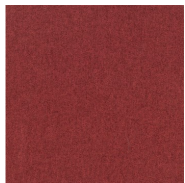


CAFÉ

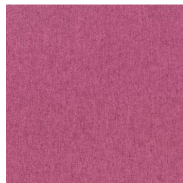


SMOKE

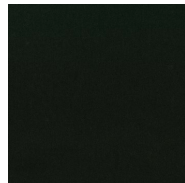
DORSET



CHERRY



MULBERRY



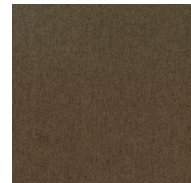
BLACK



CHARCOAL



ASH



SODA



TAUPE



CAMEL



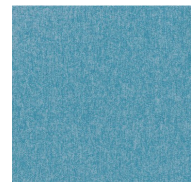
COPPER



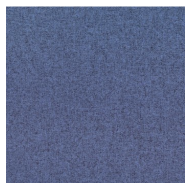
SILVER GREY



DENIM



OCEAN BLUE



BLUEBERRY



AVOCADO

Archetype

Content:	79% Polyester, 21% Rayon
Backing:	100% Polyester
Finish:	i-clean™ - a high performance stain and moisture repellent, based on Nano technology.
Weight:	9.0 oz. per linear yard
Width:	54"
Abrasion:	Heavy Duty - Exceeds 75,000 Cycles (Wyzenbeek - Cotton Duck Abradant) (ASTM D4157)
Light Fastness:	Class 4/40 hrs. Min (AATCC16A)
Color Fastness	Class 3 (ASTM D3597,AATCC8) Wet Class 4 (ASTM D3597,AATCC8) Dry
Physical Properties:	Class 4 (ASTM D35II) Brush Pill 152 lbs. Warp, 116 lbs. Weft (ASTM D5034) Breaking Strength 52 lbs. Warp, 55lbs. Weft (ASTM D4034) Seam Slippage
Passes:	California Tech. Bulletin #117 - 2013 UFAC Class I NFPA 260 CLASS I
Cleanability:	W - Water based cleaners may be used.

This fabric is made in China



For samples or further information, please contact:

Culp Inc.

Contract Fabrics

1823 Eastchester Drive

High Point, NC 27265

Phone: (336) 889-5161 • Fax: (336) 899-7848

www.culpcontract.com

Dorset

Content:	100% Polyester
Backing:	100% Polyester
Finish:	i-clean
Weight:	17.3 oz. per linear yard
Width:	54"
Abrasion:	Heavy Duty - Exceeds 55,000 Cycles (Wyzenbeek - #10 Cotton Duck Abradant) (ASTM D4157)
Light Fastness:	Class 4/40 hrs. min (AATCC16A)
Color Fastness	Class 3 (ASTM D3597,AATCC8) Wet Class 4 (ASTM D3597,AATCC8) Dry
Physical Properties:	Class 4 (ASTM D35II) Brush Pill 266 lbs. Warp, 130 lbs. Weft (ASTM D5034) Breaking Strength 41 lbs. Warp, 38lbs. Weft (ASTM D4034) Seam Slippage
Passes:	California Tech. Bulletin #117 - 2013 UFAC Class I NFPA 260 CLASS I
Cleanability:	W - Water based cleaners may be used.

This fabric is made in China



For samples or further information, please contact:

Culp Inc.
Contract Fabrics
1823 Eastchester Drive
High Point, NC 27265
Phone: (336) 889-5161 • Fax: (336) 899-7848
www.culpcontract.com