



ENNIS  
FABRICS

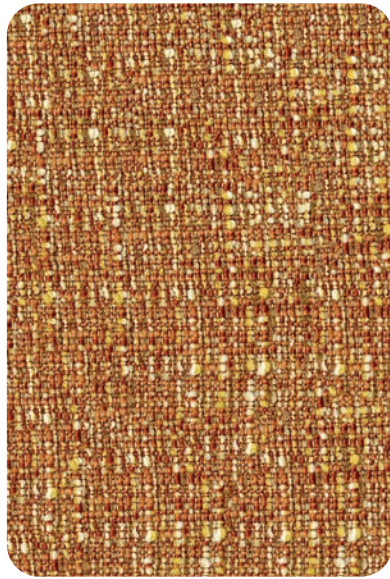
ENDUREPEL™  
FUNDAMENTALS II  
— ENERGY —



ENDUREPEL™  
SHIELD



ENDUREPEL MUSE 45 SIENNA



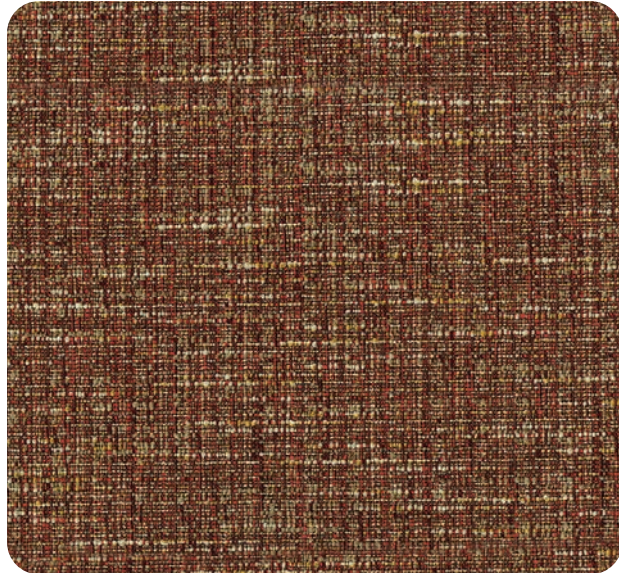
ENDUREPEL MORITZ 82 CLAY



ENDUREPEL MCCOY 62 COPPER



ENDUREPEL MCCOY 108 CORDOVAN



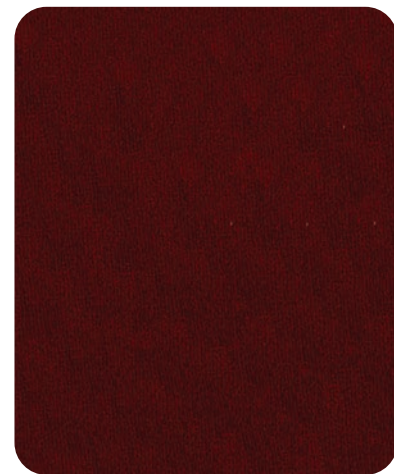
ENDUREPEL MORITZ 108 BORDEAUX



ENDUREPEL MUSE 14 CALIENTE

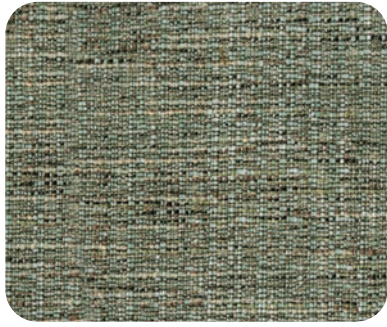


ENDUREPEL HARPER 14 POPPY



ENDUREPEL FRANKLIN 14 THEATER RED





ENDUREPEL MORITZ 205 SPEARMINT



ENDUREPEL FRANKLIN 202 SAGE



ENDUREPEL COCOON 31 WILLOW



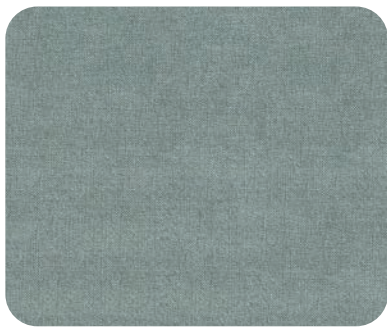
ENDUREPEL BONDI 31 DUCK EGG



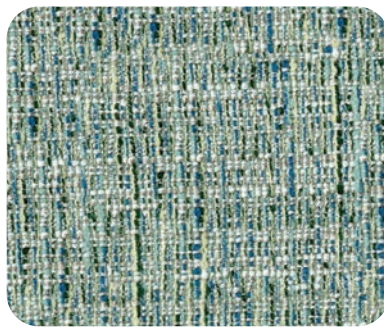
ENDUREPEL BOCA 31 DUCK EGG



ENDUREPEL BONDI 32 WILLOW



ENDUREPEL MIA 25 MIST



ENDUREPEL MORITZ 31 AEGEAN



ENDUREPEL MEDLEY 35 STORM



ENDUREPEL MORITZ 302 MALLARD



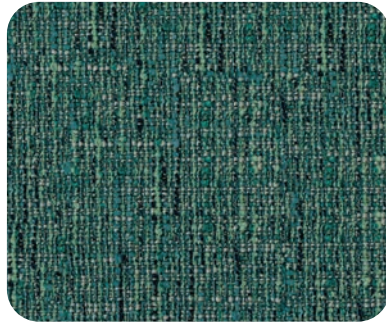
ENDUREPEL FRANKLIN 36 CERULEAN



ENDUREPEL COCOON 34 PEACOCK



ENDUREPEL MUSE 34 SLATE



ENDUREPEL MORITZ 3003 OCEAN



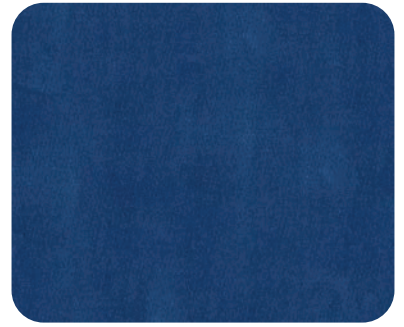
ENDUREPEL FRANKLIN 308 PETROL



ENDUREPEL PACE 308 MIDNIGHT



ENDUREPEL HARPER 308 INDIGO



ENDUREPEL FRANKLIN 306 IMPERIAL



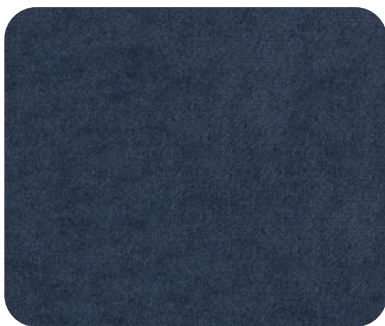
ENDUREPEL MIA 305 LAPIS



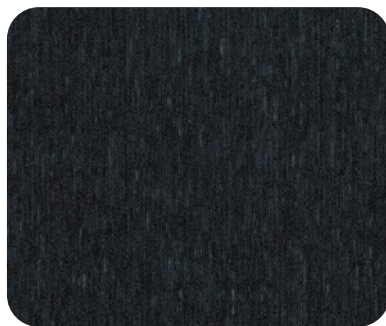
ENDUREPEL MORITZ 306 CADET



ENDUREPEL INTRIGUE 308 NAVY



ENDUREPEL MIA 308 MIDNIGHT



ENDUREPEL MCCOY 305 NAVY



ENDUREPEL FRANKLIN 3009 MIDNIGHT



For all of life's little messes.

# ENDUREPEL™ FUNDAMENTALS II

## ENERGY



### SPECIFICATIONS / SPÉCIFICATIONS

PATTERN NAME / NOM DE DESSIN	BOCA	BONDI	COCOON	FRANKLIN	HARPER	INTRIGUE	MCCOY	MEDLEY	MIA	MORITZ	MUSE	PACE	
<b>CONTENT / COMPOSITION</b>	100% Polyester	100% Polyester	100% Polyester	100% Polyester	100% Polyester	92% Polyester 8% Nylon	100% Polyester	100% Polyester	100% Polyester	100% Polyester	100% Polyester	100% Polyester	
<b>ABRASION / RÉSISTANCE À L'ABRASION</b>	60,000 DR / DF	60,000 DR / DF	100,000** DR / DF	235,000** DR / DF	145,000** DR / DF	150,000** DR / DF	50,000 DR / DF	63,000 DR / DF	60,000 DR / DF	95,000 DR / DF	50,000 DR / DF	200,000** DR / DF	
<b>COLORS / COULEURS</b>	4	5	4	11	6	7	9	4	6	11	8	3	
<b>CROCKING / DÉGORGEMENT</b>	AATCC 8: Dry (Sec) = Class(e) 4.5, Wet [Mouillé] = Class(e) 4.5	AATCC 8: Dry (Sec) = Class(e) 5, Wet [Mouillé] = Class(e) 5	AATCC 8: Dry (Sec) = Class(e) 4.5, Wet [Mouillé] = Class(e) 4.5	AATCC 8: Dry (Sec) = Class(e) 4, Wet [Mouillé] = Class(e) 4.5	AATCC 8: Dry (Sec) = Class(e) 4.5, Wet [Mouillé] = Class(e) 4.5	AATCC 8: Dry (Sec) = Class(e) 4, Wet [Mouillé] = Class(e) 4	AATCC 8: Dry (Sec) = Class(e) 4.5, Wet [Mouillé] = Class(e) 4.5	AATCC 8: Dry (Sec) = Class(e) 4.5, Wet [Mouillé] = Class(e) 4	AATCC 8: Dry (Sec) = Class(e) 4.5, Wet [Mouillé] = Class(e) 4	AATCC 8: Dry (Sec) = Class(e) 4.5, Wet [Mouillé] = Class(e) 4	AATCC 8: Dry (Sec) = Class(e) 4.5, Wet [Mouillé] = Class(e) 4	AATCC 8: Dry (Sec) = Class(e) 5, Wet [Mouillé] = Class(e) 5	AATCC 8: Dry (Sec) = Class(e) 5, Wet [Mouillé] = Class(e) 5
<b>FIRE RETARDANCY* / RÉSISTANCE AUX FEU*</b>	CALTB117- 2013, NFPA 260 Class(e) 1	CALTB117- 2013, NFPA 260 Class(e) 1	CALTB117- 2013, NFPA 260 Class(e) 1	CALTB117- 2013, NFPA 260 Class(e) 1, NFPA 701	CALTB117- 2013, NFPA 260 Class(e) 1	CALTB117- 2013, NFPA 260 Class(e) 1	CALTB117- 2013, NFPA 260 Class(e) 1	CALTB117- 2013, NFPA 260 Class(e) 1	CALTB117- 2013, NFPA 260 Class(e) 1	CALTB117- 2013, NFPA 260 Class(e) 1	CALTB117- 2013, NFPA 260 Class(e) 1	CALTB117- 2013, NFPA 260 Class(e) 1	
<b>PILLING / BOULOCHAGE</b>	ASTM D3512 Class(e) 5	ASTM D3511 Class(e) 5	ASTM D3511 Class(e) 5	ASTM D3511 Class(e) 5	ASTM D3511 Class(e) 5	ASTM D3511 Class(e) 4	ASTM D3511 Class(e) 5	ASTM D3511 Class(e) 4	ASTM D3512 Class(e) 4.5	ASTM D3511 Class(e) 3	ASTM D3511 Class(e) 4.5	ASTM D3512 Class(e) 4	
<b>RAILROADED / DIRECTION DU TISSU</b>	Yes (Oui)	Yes (Oui)	Yes (Oui)	No (Non)	Yes (Oui)	Yes (Oui)	Yes (Oui)	Yes (Oui)	No (Non)	Yes (Oui)	Yes (Oui)	No (Non)	
<b>SEAM SLIPPAGE / GLISSEMENT DE LA COUTURE</b>	ASTM D4034 - Fill [trame] 93 lbs. x Warp [chaîne] 100 lbs.	ASTM D4034 - Fill [trame] 86 lbs. x Warp [chaîne] 83 lbs.	ASTM D4034 - Fill [trame] 88 lbs. x Warp [chaîne] 102 lbs.	ASTM D4034 - Fill [trame] 109 lbs. x Warp [chaîne] 83 lbs.	ASTM D4034 - Fill [trame] 90 lbs. x Warp [chaîne] 78 lbs.	ASTM D4034 - Fill [trame] 61 lbs. x Warp [chaîne] 96 lbs.	ASTM D4034 - Fill [trame] 82 lbs. x Warp [chaîne] 92.5 lbs.	ASTM D4034 - Fill [trame] 113 lbs. x Warp [chaîne] 113 lbs.	ASTM D4034 - Fill [trame] 59 lbs. x Warp [chaîne] 95 lbs.	ASTM D4034 - Fill [trame] 99 lbs. x Warp [chaîne] 103 lbs.	ASTM D4034 - Fill [trame] 88 lbs. x Warp [chaîne] 86 lbs.	ASTM D4034 - Fill [trame] 95 lbs. x Warp [chaîne] 96 lbs.	
<b>TEAR STRENGTH / RÉSISTANCE À LA DÉCHIRURE</b>	ASTM D2262 - Fill [trame] 12 lbs. x Warp [chaîne] 25 lbs.	ASTM D2261 - Fill [trame] 53 lbs. x Warp [chaîne] 62 lbs.	ASTM D2261 - Fill [trame] 26.8 lbs. x Warp [chaîne] 15 lbs.	ASTM D2261 - Fill [trame] 18.9 lbs. x Warp [chaîne] 13.9 lbs.	ASTM D2261 - Fill [trame] 14 lbs. x Warp [chaîne] 14 lbs.	ASTM D2261 - Fill [trame] 18.5 lbs. x Warp [chaîne] 22.7 lbs.	ASTM D2261 - Fill [trame] 30 lbs. x Warp [chaîne] 28.2 lbs.	ASTM D2261 - Fill [trame] 36.8 lbs. x Warp [chaîne] 47.2 lbs.	ASTM D2261 - Fill [trame] 16 lbs. x Warp [chaîne] 20 lbs.	ASTM D2261 - Fill [trame] 53 lbs. x Warp [chaîne] 65 lbs.	ASTM D2261 - Fill [trame] 50 lbs. x Warp [chaîne] 73 lbs.	ASTM D2261 - Fill [trame] 84 lbs. x Warp [chaîne] 79 lbs.	
<b>UV/LIGHTFASTNESS / RÉSISTANCE AUX RAYONS DE LUMIÈRE</b>	AATCC 16: Class(e) 4	AATCC 16: Class(e) 4	AATCC 16: Class(e) 4.5	AATCC 16: Class(e) 4	AATCC 16: Class(e) 4	AATCC 16: Class(e) 4	AATCC 16: Class(e) 4	AATCC 16: Class(e) 4	AATCC 16: Class(e) 4	AATCC 16: Class(e) 4.5	AATCC 16: Class(e) 4.5	AATCC 16: Class(e) 4	
<b>WEIGHT / POIDS</b>	21.63 oz./ yd [vg]; 14.16 oz./ sq yd [vg²]	18.93 oz./ yd [vg]; 12.39 oz./ sq yd [vg²]	16.36 oz./ yd [vg]; 10.92 oz./ sq yd [vg²]	18.47 oz./ yd [vg]; 12.10 oz./sq yd [vg²]	10.55 oz./ yd [vg]; 6.79 oz./sq yd [vg²]	20.95 oz./ yd [vg]; 13.72 oz./ sq yd [vg²]	20.63 oz./ yd [vg]; 13.5 oz./sq yd [vg²]	21.30 oz./ yd [vg]; 14.2 oz./sq yd [vg²]	19.27 oz./ yd [vg]; 12.39 oz./ sq yd [vg²]	20.28 oz./ yd [vg]; 13.28 oz./ sq yd [vg²]	24.14 oz./ yd [vg]; 15.80 oz./ sq yd [vg²]	15.83 oz./ yd [vg]; 10.00 oz./ sq yd [vg²]	
<b>WIDTH / LARGEUR</b>	54" [137 cm]	56" [142 cm]	56" [142 cm]	56" [142 cm]	56" [142 cm]	54" [137 cm]	55" [140 cm]	56" [142 cm]	56" [142 cm]	54" [137 cm]	56" [142 cm]	57" [144 cm]	
<b>ROLL SIZE /TAILLE DU ROULEAU</b>	40 yards [36 m]	50 yards [46 m]	55 yards [50 m]	45 yards [40 m]	55 yards [50 m]	50 yards [46 m]	50 yards [46 m]	55 yards [50 m]	50 yards [46 m]	50 yards [46 m]	55 yards [50 m]	55 yards [50 m]	

This term and any corresponding data refer to typical performance in the specific tests indicated and should not be construed to imply the behaviour of this or any other material under actual fire conditions.

\*This information is offered for your general guidance only. It's accurate to the best of our knowledge and is not intended to relieve the user from their responsibility to investigate and understand other pertinent sources of information and to comply with all laws and procedures applicable to the safe handling and use of this material.

\*\*Results above 100,000 double rubs have not been shown to be an indicator of increased lifespan.

Les résultats rapportés d'après la norme ci-dessus ne définissent pas nécessairement les risques que représente ce matériau dans des conditions réelles d'incendie.

\*Ces renseignements sont offerts à titre consultatif seulement. Ils sont précis, au mieux de nos connaissances, et ne sont pas destinés à décharger l'utilisateur de sa responsabilité d'étudier et de comprendre les autres sources pertinentes de renseignements, ni de se conformer à toutes les lois et procédures relatives à la manipulation et à l'utilisation sécuritaires de ce matériau. La décision finale du type d'application du produit appartient à l'utilisateur.

\*\*Les doubles frottements supérieurs à 100 000 ne sont pas un indicateur d'une durée de vie accrue pour un produit.



ENDFUN2BC-2  
0820



ENDUREPEL™  
SHIELD

CANADA ENGLISH 800 663 6647 · FRANÇAIS 888 663 6647  
USA 877 953 6647  
FAX 888 274 2910  
ORDERS@ENNISFABRICS.COM  
ENNISFABRICS.COM