



ENNIS
FABRICS

DAY & NIGHT

STABILITY III



ENDUREPEL
SHIELD

DAY & NIGHT

STABILITY III



Features: Endurepel Shield Anti-Stain, Fire Retardant
End Uses: Contract Rated Bedding and Upholstery

Caractéristiques: Résistant aux tache (Endurepel Shield),
résistant aux feu

Utilisations: Literie et rembourrage commercial



Ambition 709 Onyx



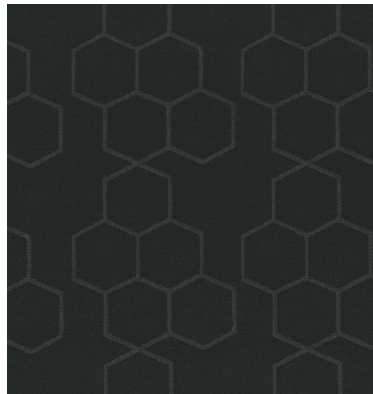
Ascend 93 Smoke



Axis 93 Smoke



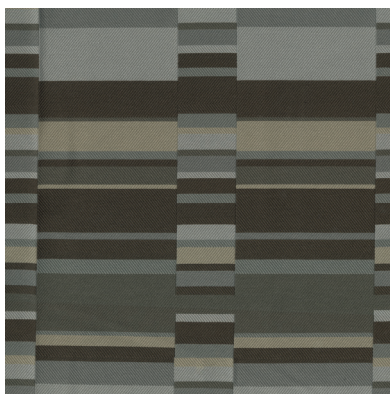
Bravery 902 Birch



Pursuit 97 Graphite



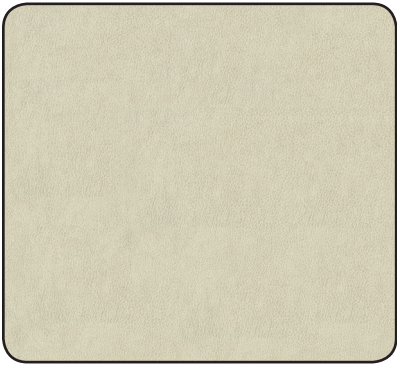
Resilient 902 Birch



Valiant 94 Slate



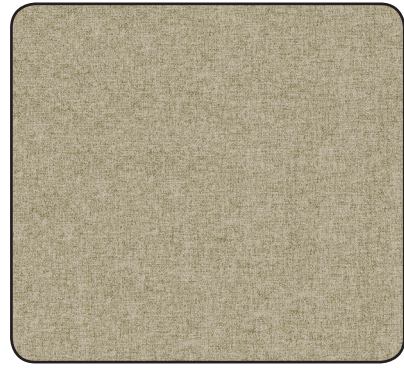
Vitality 902 Birch



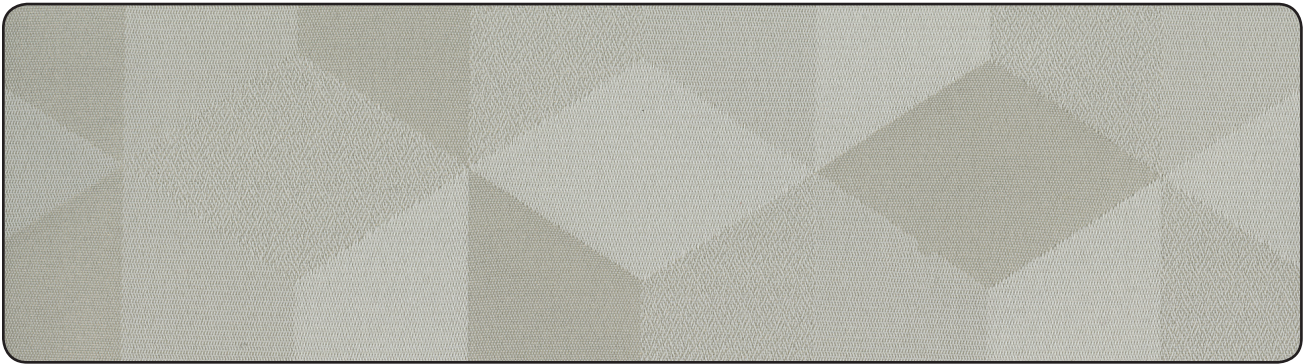
CLARO 600 BONE



SUMMIT 602 OATMEAL



ENDUREPEL MONROE 81 QUARTZ



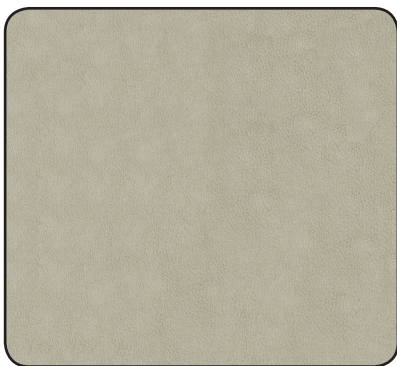
RESILIENT 902 BIRCH



VITALITY 902 BIRCH



BRAVERY 902 BIRCH



CLARO 902 ALABASTER



ENDUREPEL MONROE 9003 PEWTER



VITALITY 91 DOVE





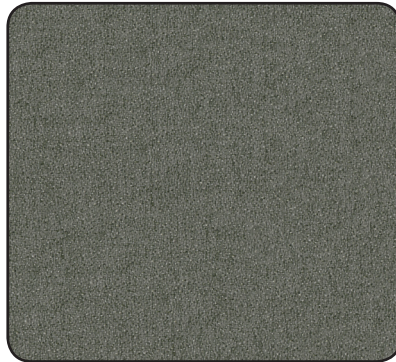
AXIS 93 SMOKE



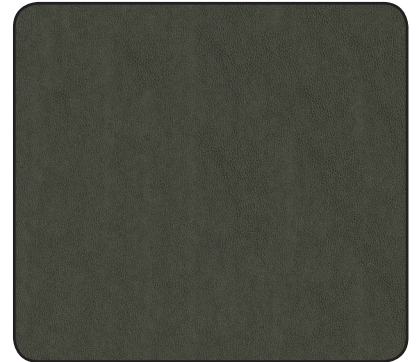
ASCEND 93 SMOKE



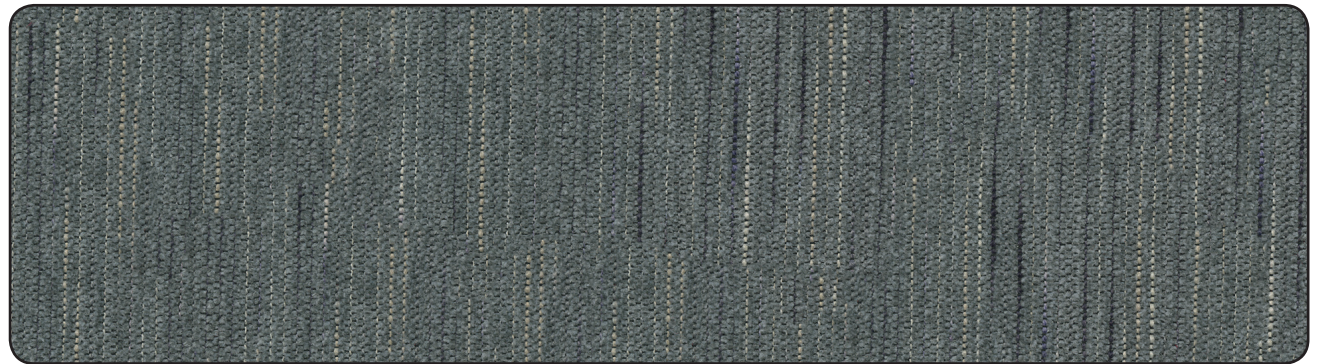
CLARO 9003 ASH



ENDUREPEL MONROE 86 MINERAL



CLARO 9006 GUNMETAL



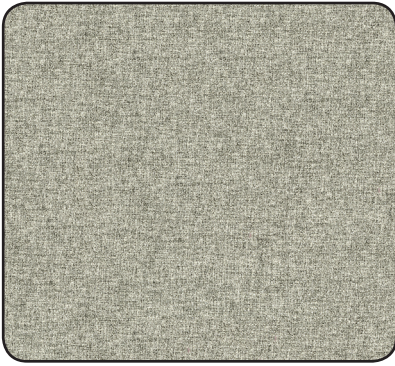
SUMMIT 96 ASH



AMBITION 709 ONYX



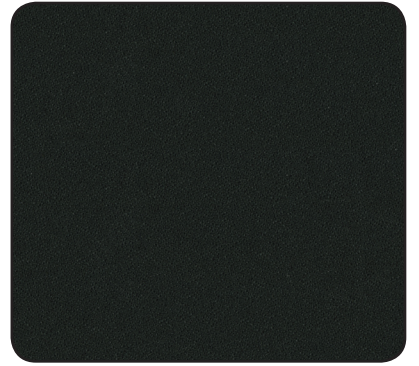
ASCEND 99 ZEBRA



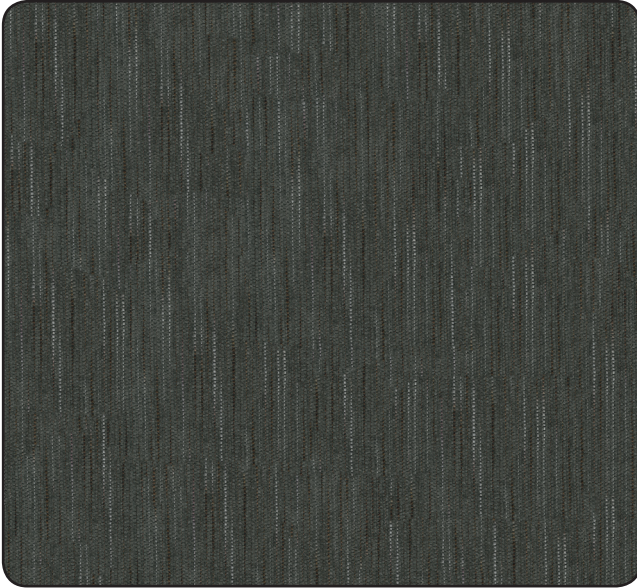
ENDUREPEL MONROE 902 MICA



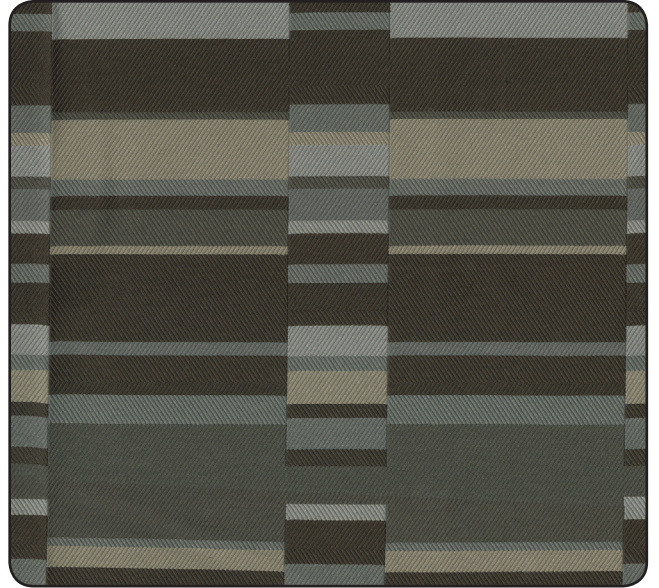
AXIS 709 ONYX



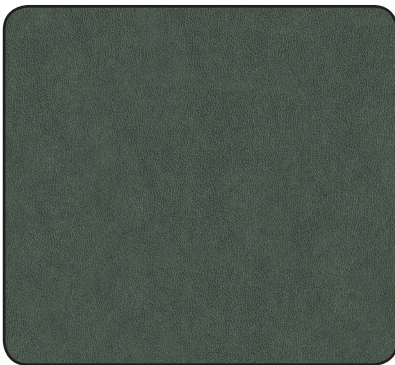
ENDUREPEL MONROE 9009 BLACK



SUMMIT 94 SLATE



VALIANT 94 SLATE



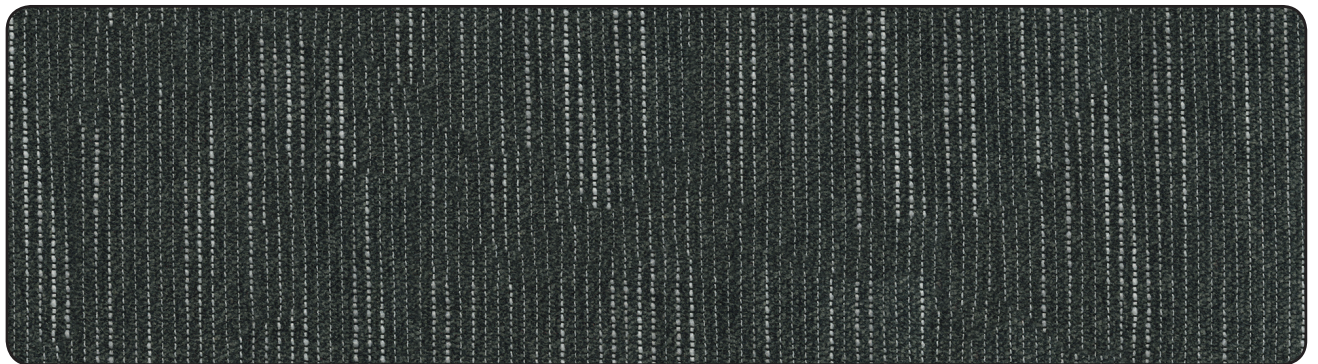
CLARO 905 SMOKE



PURSUIT 97 GRAPHITE



CLARO 909 CHARCOAL



SUMMIT 908 CHARCOAL

DAY & NIGHT STABILITY III



SPECIFICATIONS / SPÉCIFICATIONS

PATTERN NAME / NOM DE DESSIN	AMBITION	ASCEND	AXIS	BRAVERY	CLARO	ENDUREPEL		PURSUIT	RESILIENT	SUMMIT	VALIANT	VITALITY
						MONROE						
CONTENT / COMPOSITION	100% Polyester	100% Polyester	100% Polyester	100% Polyester	100% Polyurethane	100% Polyester	100% Polyester	100% Polyester	100% Polyester	100% Polyester	100% Polyester	100% Polyester
ABRASION / RÉSISTANCE À L'ABRASION	100,000 Double Rubs (Double Frottements)	75,000 Double Rubs (Double Frottements)	50,000 Double Rubs (Double Frottements)	105,000 Double Rubs (Double Frottements)	100,000 Double Rubs (Double Frottements)	165,000 Double Rubs (Double Frottements)	105,000 Double Rubs (Double Frottements)	105,000 Double Rubs (Double Frottements)	105,000 Double Rubs (Double Frottements)	90,000 Double Rubs (Double Frottements)	100,000 Double Rubs (Double Frottements)	105,000 Double Rubs (Double Frottements)
COLORS / COULEURS	7	10	7	2	16	12	4	3	10	7	2	
CROCKING / DÉGORGEMENT	AATCC 8: Dry (Sec) 4.5, Wet (Mouillé) 4.5	AATCC 8: Dry (Sec) 4.5, Wet (Mouillé) 4.5	AATCC 8: Dry (Sec) 4.5, Wet (Mouillé) 4.5	AATCC 8: Dry (Sec) 4.5, Wet (Mouillé) 5	AATCC 8: Dry (Sec) 4, Wet (Mouillé) 4	AATCC 8: Dry (Sec) 5, Wet (Mouillé) 5	AATCC 8: Dry (Sec) 4.5, Wet (Mouillé) 5	AATCC 8: Dry (Sec) 4.5, Wet (Mouillé) 5	AATCC 8: Dry (Sec) 4, Wet (Mouillé) 4.5	AATCC 8: Dry (Sec) 4.5, Wet (Mouillé) 4.5	AATCC 8: Dry (Sec) 4.5, Wet (Mouillé) 5	AATCC 8: Dry (Sec) 4.5, Wet (Mouillé) 5
FINISH/ TRAITEMENT	Endurepel Shield	Endurepel Shield	Endurepel Shield	Endurepel Shield	N/A	Endurepel Shield	Endurepel Shield	Endurepel Shield	Endurepel Shield	Endurepel Shield	Endurepel Shield	Endurepel Shield
FIRE RETARDANCY* / RÉSISTANCE AUX FEU*	CALTB117-2013, MVSS302, NFPA 260 Class(e) 1, UFAC Class(e) 1	CALTB117-2013, MVSS302, NFPA 260 Class(e) 1, UFAC Class(e) 1	CALTB117-2013, MVSS302, NFPA 260 Class(e) 1, UFAC Class(e) 1	CALTB117-2013, MVSS302, NFPA 260 Class(e) 1, UFAC Class(e) 1	CALTB117-2013, MVSS302, NFPA 260 Class(e) 1	CALTB117-2013, NFPA 260 Class(e) 1, UFAC Class(e) 1	CALTB117-2013, MVSS302, NFPA 260 Class(e) 1, UFAC Class(e) 1	CALTB117-2013, MVSS302, NFPA 260 Class(e) 1, UFAC Class(e) 1	CALTB117-2013, MVSS302, NFPA 260 Class(e) 1, UFAC Class(e) 1	CALTB117-2013, MVSS302, NFPA 260 Class(e) 1, UFAC Class(e) 1	CALTB117-2013, MVSS302, NFPA 260 Class(e) 1, UFAC Class(e) 1	CALTB117-2013, MVSS302, NFPA 260 Class(e) 1, UFAC Class(e) 1
PILLING/ BOULOCHAGE	ASTM D4970 - Class(e) 4	ASTM D4970 - Class(e) 3.5	ASTM D4970 - Class(e) 3.5	ASTM D3511 - Class(e) 5	N/A	ASTM D3512 - Class(e) 4	ASTM D3511 - Class(e) 5	ASTM D3511 - Class(e) 5	ASTM D3511 - Class(e) 5	ASTM D3511 - Class(e) 5	ASTM D4970 - Class(e) 4	ASTM D3511 - Class(e) 5
RAILROADED / IMPRIMÉ SUR LA LARGEUR	No / Non	No / Non	No / Non	No / Non	No / Non	No / Non	No / Non	No / Non	No / Non	Yes / Oui	No / Non	No / Non
REPEAT / RÉPÉTITION	L: 7.8" (20.0 cm) W: 4.8" (12.2 cm)	L: 8.2" (21.0 cm) W: 9.8" (25.0 cm)	L: 4.6" (11.7 cm) W: 3.7" (9.4 cm)	L: 8.8" (22.5 cm) W: 15.1" (38.5 cm)	N/A	N/A	L: 4.2" (10.7 cm) W: 3.7" (9.6 cm)	L: 11.8" (30.1 cm) W: 15.2" (38.6 cm)	N/A	L: 13.0" (33.0 cm) W: 7.2" (18.2 cm)	L: 7.9" (20.2 cm) W: 7.6" (19.3 cm)	
ROLL SIZE / TAILLE DU ROULEAU	50 yd (46 m)	50 yd (46 m)	50 yd (46 m)	50 yd (46 m)	40 yd (36 m)	55 yd (50 m)	50 yd (46 m)	50 yd (46 m)	50 yd (46 m)	50 yd (46 m)	50 yd (46 m)	50 yd (46 m)
SEAM SLIPPAGE / GLISSEMENT DE LA COUTURE	ASTM D4034: Warp (chaîne) 51 lbs, Fill (trame) 79 lbs.	ASTM D4034: Warp (chaîne) 71 lbs, Fill (trame) 85 lbs.	ASTM D4034: Warp (chaîne) 71 lbs, Fill (trame) 85 lbs.	ASTM D4034: Warp (chaîne) 91 lbs, Fill (trame) 63 lbs.	N/A	ASTM D4034: Warp (chaîne) 112 lbs, Fill (trame) 83 lbs.	ASTM D4034: Warp (chaîne) 91 lbs, Fill (trame) 63 lbs.	ASTM D4034: Warp (chaîne) 91 lbs, Fill (trame) 63 lbs.	ASTM D4034: Warp (chaîne) 71 lbs, Fill (trame) 75 lbs.	ASTM D4034: Warp (chaîne) 51 lbs, Fill (trame) 79 lbs.	ASTM D4034: Warp (chaîne) 91 lbs, Fill (trame) 63 lbs.	ASTM D4034: Warp (chaîne) 91 lbs, Fill (trame) 63 lbs.
TEAR STRENGTH / RÉSISTANCE À LA DÉCHIRURE	ASTM D2261: Warp (chaîne) 30 lbs, Fill (trame) 45 lbs.	ASTM D2261: Warp (chaîne) 30 lbs, Fill (trame) 89 lbs.	ASTM D2261: Warp (chaîne) 30 lbs, Fill (trame) 89 lbs.	ASTM D2261: Warp (chaîne) 15 lbs, Fill (trame) 26 lbs.	ASTM D2261: Warp (chaîne) 10 lbs, Fill (trame) 10 lbs.	ASTM D1424: Warp (chaîne) 14 lbs, Fill (trame) 14 lbs.	ASTM D2261: Warp (chaîne) 15 lbs, Fill (trame) 26 lbs.	ASTM D2261: Warp (chaîne) 15 lbs, Fill (trame) 26 lbs.	ASTM D2261: Warp (chaîne) 15 lbs, Fill (trame) 38 lbs.	ASTM D2261: Warp (chaîne) 30 lbs, Fill (trame) 45 lbs.	ASTM D2261: Warp (chaîne) 15 lbs, Fill (trame) 26 lbs.	ASTM D2261: Warp (chaîne) 15 lbs, Fill (trame) 26 lbs.
TENSILE STRENGTH/ RÉSISTANCE À LA TRACTION	ASTM D5034: Warp (chaîne) 307 lbs, Fill (trame) 235 lbs.	ASTM D5034: Warp (chaîne) 333 lbs, Fill (trame) 432 lbs.	ASTM D5034: Warp (chaîne) 333 lbs, Fill (trame) 432 lbs.	ASTM D5034: Warp (chaîne) 181 lbs, Fill (trame) 247 lbs.	N/A	N/A	ASTM D5034: Warp (chaîne) 181 lbs, Fill (trame) 247 lbs.	ASTM D5034: Warp (chaîne) 181 lbs, Fill (trame) 247 lbs.	ASTM D5034: Warp (chaîne) 122 lbs, Fill (trame) 115 lbs.	ASTM D5034: Warp (chaîne) 307 lbs, Fill (trame) 235 lbs.	ASTM D5034: Warp (chaîne) 181 lbs, Fill (trame) 247 lbs.	ASTM D5034: Warp (chaîne) 181 lbs, Fill (trame) 247 lbs.
UV/LIGHTFAST- NESS/ RÉSISTANCE AUX RAYONS DE LUMIÈRE	AATCC 16.3 - Grade 4.5	AATCC 16.3 - Grade 4.5	AATCC 16.3 - Grade 4.5	AATCC 16.3 - Grade 4	N/A	N/A	AATCC 16.3 - Grade 4	AATCC 16.3 - Grade 4	AATCC 16.3 - Grade 3.5	AATCC 16.3 - Grade 4.5	AATCC 16.3 - Grade 4.5	AATCC 16.3 - Grade 4
WEIGHT / POIDS	15.41 oz./lin yd (vg) 9.74 oz./yd ² (vg ²)	19.15 oz./lin yd (vg) 12.09 oz./yd ² (vg ²)	16.58 oz./lin yd (vg) 10.47 oz./yd ² (vg ²)	11.60 oz./lin yd (vg) 7.08 oz./yd ² (vg ²)	27.56 oz./lin yd (vg) 17.11 oz./yd ² (vg ²)	15.15 g./m ² (m ²) 9.74 oz./yd ² (vg ²)	11.60 oz./lin yd (vg) 7.08 oz./yd ² (vg ²)	11.60 oz./lin yd (vg) 7.08 oz./yd ² (vg ²)	10.74 oz./lin yd (vg) 6.78 oz./yd ² (vg ²)	19.85 oz./lin yd (vg) 12.53 oz./yd ² (vg ²)	11.60 oz./lin yd (vg) 7.08 oz./yd ² (vg ²)	11.60 oz./lin yd (vg) 7.08 oz./yd ² (vg ²)
WIDTH / LARGEUR	57" (144 cm)	57" (144 cm)	57" (144 cm)	59" (149 cm)	58" (147 cm)	56" (142 cm)	59" (149 cm)	59" (149 cm)	57" (144 cm)	57" (144 cm)	59" (149 cm)	59" (149 cm)

Specifications that are standard for all woven patterns above: **Cleaning Code:** W - Mild Soap/Water Based Cleaner (Claro: MSWD - Mild Soap and Water, Dry Immediately)

*This term and any corresponding data refer to typical performance in the specific tests indicated and should not be construed to imply the behaviour of this or any other material under actual fire conditions.

**This term and any corresponding data refer to typical performance in the specific tests indicated and should not be construed to imply the behaviour of this or any other material under actual fire conditions. ** This information is offered for your general guidance only. It's accurate to the best of our knowledge and is not intended to relieve the user from their responsibility to investigate and understand other pertinent sources of information and to comply with all laws and procedures applicable to the safe handling and use of this material.

Les spécifications sont standard pour tous les tissé patrons mentionnés: **Code de nettoyage:** W—Savon doux/Nettoyant a base d'eau (Claro: MSWD - Savon doux et de l'eau. Secher immediatement)

*Les résultats rapportés d'après la norme ci-dessus ne définissent pas nécessairement les risques que représente ce matériau dans des conditions réelles d'incendie. ** Ces renseignements sont offerts à titre consultatif seulement. Ils sont précis, au mieux denos connaissances, et ne sont pas destinés à décharger l'utilisateur de sa responsabilité d'étudier et de comprendre les autres sources pertinentes de renseignements, ni de se conformer à toutes les lois et procédures relatives à la manipulation et à l'utilisation sécuritaires de ce matériau. La décision finale du type d'application du produit appartient à l'utilisateur.



STABILDAYCBC
0319



ENDUREPEL
SHIELD



ENNIS
FABRICS

CANADA ENGLISH 800 663 6647 · FRANÇAIS 888 663 6647
USA 877 953 6647
FAX 888 274 2910

ENNISFABRICS.COM